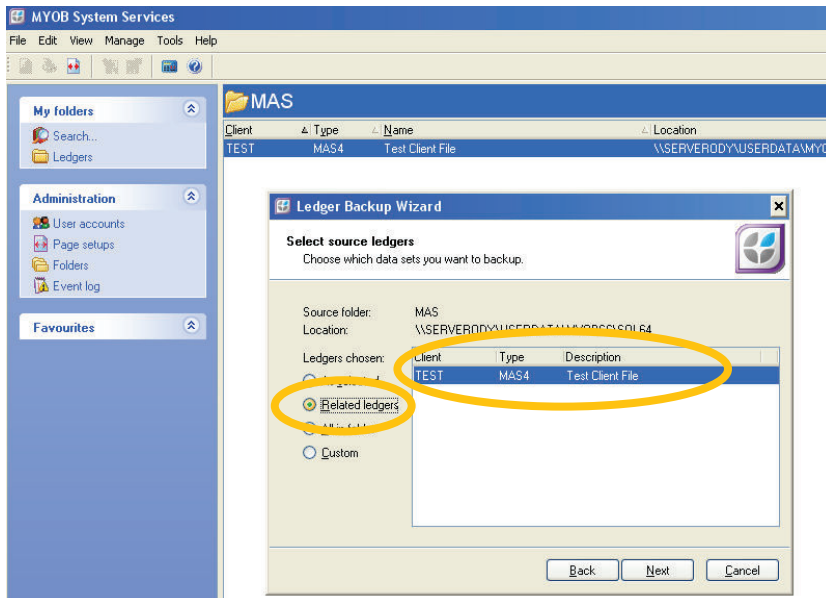


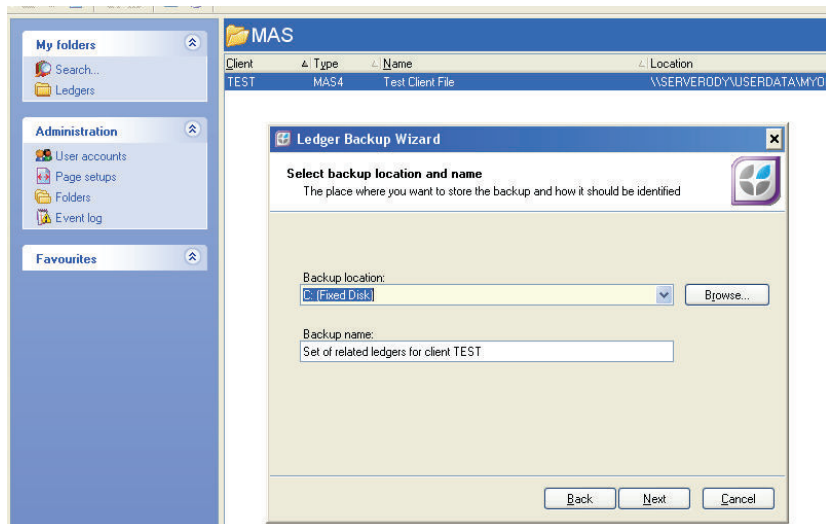
AE MAS - Backing Up General Ledger



Step 4

Step Four

- Select **Related Ledgers**
- Select relevant **AST** or **MAS4** files
- Select **Next**

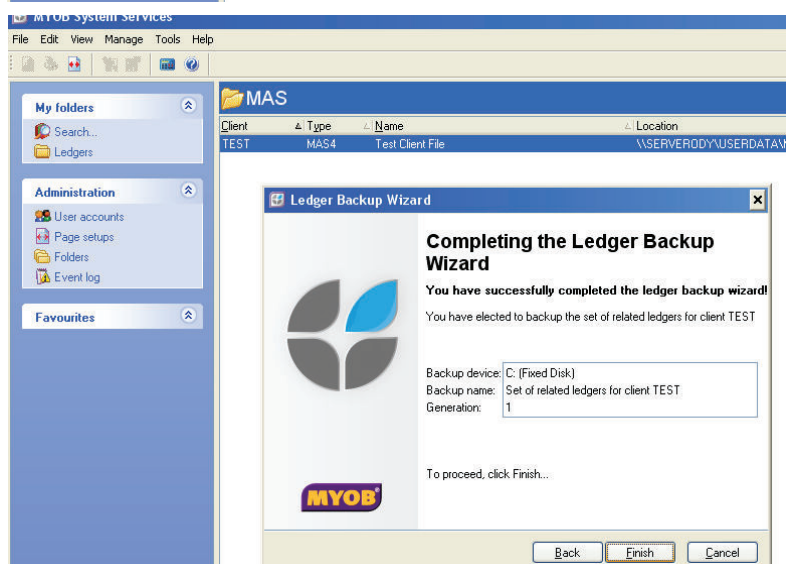


Step 5

Step Five

Select the location you want to save the backup file to.

- In **Backup Name**, select the client code used in Solution 6.
- Select **Next**



Step 6

Step Six

You will receive confirmation that you have successfully completed the **Ledger Backup Wizard** Window.

- Select **Finish** to complete the process.

